



# BRIGHT & SURROUNDS

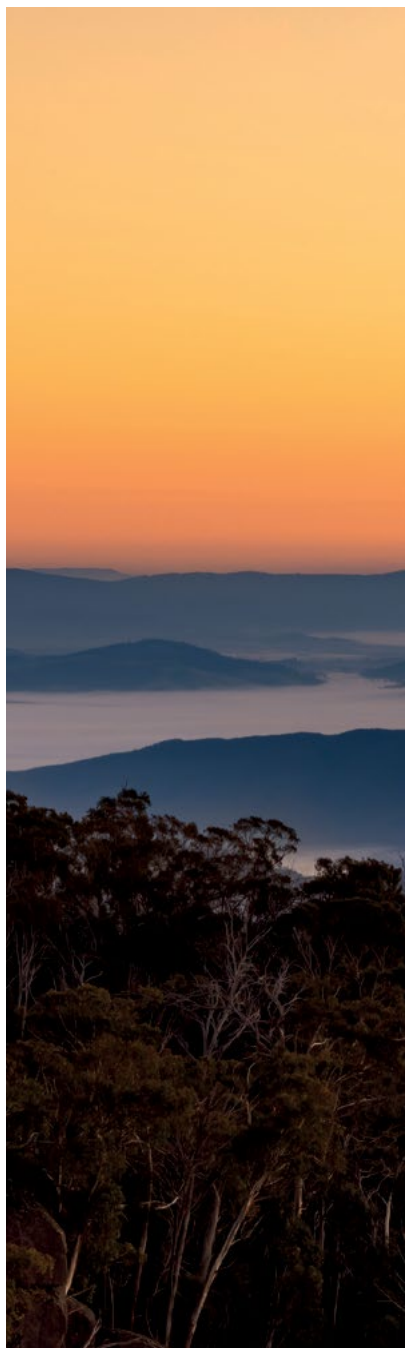
Bright  
Dinner Plain  
Harrietville  
Mount Beauty  
Myrtleford

OFFICIAL  
VISITOR  
GUIDE



# CONTENTS

Map	3	Rail Trail & Bike Paths	30
Top 10 Things To Do	4	Road Cycling	32
Welcome	6	Gravel Rides	33
Bright	8	Mountain Bike Parks	34
Myrtleford	9	Adventure	35
Mount Beauty	10	Eat & Drink	36
Harrietville	11	Shopping & Markets	40
Dinner Plain	12	Family Favourites	42
Alpine Resorts	13	Festivals & Events	44
National Parks	14	Museums	46
Short Walks	16	Art	47
Iconic Walks	18	Visitor Information	48
Lookouts & Waterfalls	20		
Landscapes	22		
Swimming Spots	24		
Fishing Spots	26		
Scenic Drives	28		



## ACKNOWLEDGEMENT OF COUNTRY

We acknowledge the Dhudhuroa, Gunaikurnai, Jaithmathang, Taungurung, and Waywurru peoples as the First Nations peoples on whose Countries we find Bright & Surrounds.

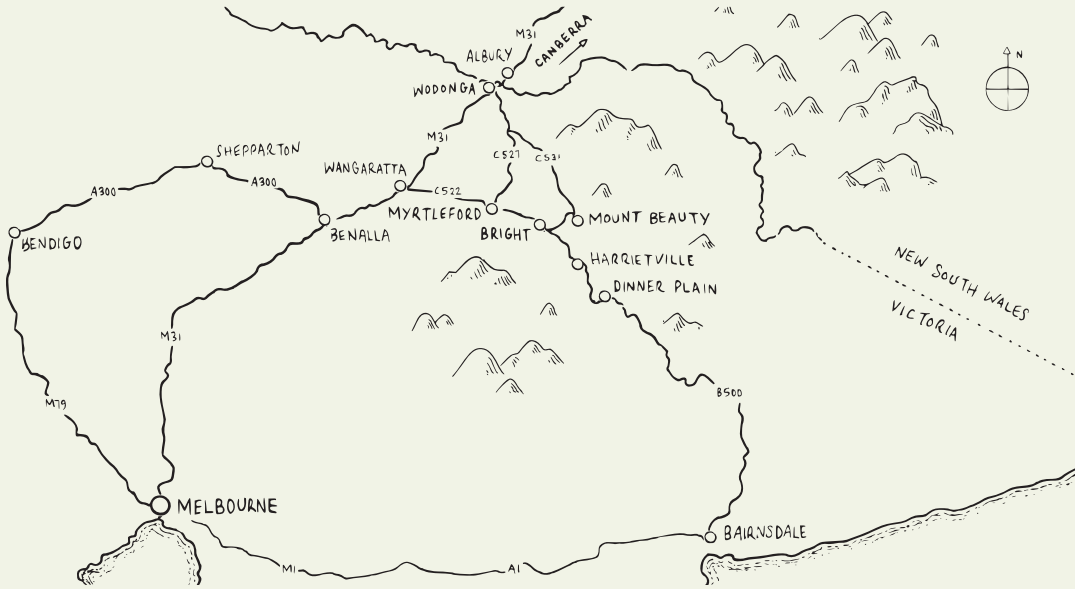
We recognise their ancient and continuing presence as Traditional Custodians of the mountains, valleys, waters and sky of this beautiful region and their sacred roles as knowledge holders and caretakers of Country.

We pay our respects to their Elders, past, present, and emerging.

# EXPLORE BRIGHT & SURROUNDS



↖ Great Valley Trail, Harrietsville



## GETTING HERE



### BY ROAD

Bright is a 3 ½ hour drive from Melbourne via the M31 Hume Freeway. Take the C522 Snow Road exit near Glenrowan then turn right on the B500 Great Alpine Road at Gapsted.



### BY BUS

V/Line runs daily buses from Wangaratta to Myrtleford, Bright and Mount Beauty: [vline.com.au](http://vline.com.au)

Alps Bus Link offers services from Bright to Omeo via Harrietville, Mount Hotham and Dinner Plain: [dysongroup.com.au/alps-link](http://dysongroup.com.au/alps-link)



### BY TRAIN

Trains run daily from Melbourne and Sydney to Wangaratta, where a bus service or car hire is available.



### BY AIR

Albury airport is 1 ¼ hours from Mount Beauty and 1 ½ hours from Bright. Flights operate from Melbourne, Sydney and Brisbane. Taxis and car hire are available.

# TOP 10 THINGS TO DO IN BRIGHT & SURROUNDS

---

1.

## **MOUNT BUFFALO GORGE LOOKOUT**

Breathtaking views, a towering waterfall, clifftop walk and heritage-listed Chalet. **Page 14**

---

2.

## **MURRAY TO MOUNTAINS FARM GATE & WINE TRAIL**

Cycle Australia's most famous rail trail between farm gates and cellar doors. **Page 31**

3.

## **MOUNT BOGONG AT 1,986 M**

Summit Victoria's highest mountain. **Page 19** Or view it from Sullivans Lookout. **Page 21**

4.

## **TRONOH DREDGE HOLE**

Swim, walk, fish or relax with a picnic at Harrietville's historic waterhole. **Pages 17 & 25**

---

5.

## **THE MOSAIC TRAIL**

Slow down and enter Myrtleford's enchanted world of hidden Mosaics. **Page 17**

6.

## **CANYON WALK**

Explore Bright's gold-mining past on this tranquil loop along the Ovens River. **Page 17**

7.

## **GREAT VALLEY TRAIL**

Escape the traffic on this scenic sealed bike path between Bright and Harrietville. **Page 31**

---

8.

## **DRIVE AUSTRALIA'S HIGHEST ROAD**

Be mesmerised by mountain views on the scenic drive up to Dinner Plain. **Page 28**

9.

## **MYSTIC MOUNTAIN BIKE PARK**

Ride the unforgettable trails of one of Australia's favourite MTB Parks. **Page 34**

10.

## **FISHING IN THE KIEWA VALLEY**

These pristine waters form one of Victoria's most renowned trout fishing havens. **Page 26**



# WELCOME TO BRIGHT & SURROUNDS

---

↳ Porepunkah



↳ Wandiligong





↓ *Dinner Plain*



## Where life moves with the seasons.

Thanks for exploring our beautiful pocket of the High Country. We're delighted you've come and we'd like to help you tailor-make the escape you crave by showing you around this region we call Bright & Surrounds.

From the high alpine peaks, snow-capped in winter, to the green river valleys bursting with summer harvests; the blossoming tree-lined streets of spring to the golden hues of autumn – the rhythm of nature rewards you with a spectacular display whichever time of year you visit.

Discover our towns and villages – each with its own distinct personality – and get outside and enjoy what our region has to offer; whether it's hiking, cycling, swimming, paragliding, kayaking, shopping or tasting the rich flavours of Bright & Surrounds.

So let's get started...



↑ *Harrietville*

# BRIGHT

Picture-perfect tree-lined streets, mountain views, trendy eateries and an outdoors culture that's infectious.

It's little wonder this former gold-mining town has become one of Australia's favourite tourist destinations: there's a vibrancy here that can't be replicated. Located on the banks of the Ovens River at the foothills of the Australian Alps, the township of Bright seduces you with grand mountainscapes that promise adventure; it entices you with its boutique stores and temptatious food and wine scene; then soothes you with the song of the river and the creature comforts of home and more. Whether you're after a relaxing country retreat or an action-packed weekend, you'll find what you're craving here in Bright.

↓ *Ireland Street, Bright*



## FIVE OF OUR FAVOURITES

1. Huggins Lookout Walk  
Page 21
2. River Pool & Splash Park  
Page 25
3. Bennetts Trail Bike Path to Wandiligong  
Page 31
4. Make It, Bake It, Grow It Market  
Page 41
5. Mystic Mountain Bike Park  
Page 34



# MYRTLEFORD

The cultural heart of Bright & Surrounds is a melting pot of flavours so addictive you'll be back for more.

Myrtleford is the perfect mix of country and culture: a town that thrives on its agricultural roots and equally celebrates the diversity of the cultures that have settled here with creativity and flare. From its eclectic mosaic art, Middle Eastern bazaar and Italian street festivals to the annual rodeo and the farmers market, Myrtleford mixes it all into one big melting pot of goodness and the result is tantalising. Stay in our hilltop villas with mountain views, taste our culinary delights cooked fresh with locally grown ingredients, and sit and listen to the sound of the river as you discover this beautiful pocket of the High Country.

↓ *Historic Tobacco Kilns, Myrtleford*



## FIVE OF OUR FAVOURITES

1. Murray to Mountains Farm Gate & Wine Trail  
**Page 31**

---

2. The Mosaic Trail  
**Page 17**

---

3. Reform Hill Lookout Walk  
**Page 21**

---

4. Myrtleford Farmers Market  
**Page 41**

---

5. Lake Buffalo  
**Page 25**

---




# MOUNT BEAUTY

A Shangri-La, where the locals ski all winter and mountain bike summerlong. Heaven does exist.

Mount Beauty moves to a different beat; one that's as chilled-out as the mountain air itself. It's a town embraced by a mountain so beautiful, it inspires a name; where young wide-eyed adventurers blow in with the first dusting of snow and never leave. It's a utopia that rests in the bucolic Kiewa Valley among rivers teeming with fish, orchards, vineyards and dairy farms, and is presided over by Victoria's highest mountain, Mount Bogong – snow-capped for four months of the year. It's the gateway to Falls Creek and the Alpine National Park's mesmerising Bogong High Plains, and it's about to become your favourite hideaway.

↓ *Views of Mount Bogong, Mount Beauty*



## FIVE OF OUR FAVOURITES

1. Sullivans Lookout  
**Page 21**

---

2. The Gorge Walk  
**Page 17**

---

3. Kiewa River Trail  
**Page 31**

---

4. Wallaces Hut & Bogong High Plains  
**Page 23**

---

5. Big Hill Mountain Bike Park  
**Page 34**

---




# HARRIETVILLE

This sanctuary is a true escape, where avenues of trees meet the frontier of alpine wilderness.

The small village of Harrietville, hiding in the foothills of Mount Hotham and the Alpine National Park, is the sort of place where locals smile at you on their way to the pub raffle; a place so quaint the bakery is also the post office, and so quiet you need to stock up on petrol and groceries before you arrive – a true escape. Even so, there's room enough for two country pubs. Surrounded by walking trails and relics of the town's gold mining past, Harrietville is where the rush of the modern world slips away amid a choir of birdsong and the babbling of the rivers as you rest in the comfort of your country cottage.

↓ *Tavare Park, Harrietville*



## FIVE OF OUR FAVOURITES

1. Tronoh Dredge Hole  
Pages 17 & 25

---

2. Cycle the Great Valley Trail  
Page 31

---

3. Hike to the summit of Mount Feathertop  
Page 19

---

4. Harrietville Museum  
Page 46

---

5. Scenic drive to Dinner Plain  
Page 28

---




# DINNER PLAIN

The nicest little snow village in Australia makes for a great summertime getaway as well.

Whether it's knee-deep in snow or bursting with wildflowers, the alpine village of Dinner Plain is an architectural delight set among one of the most stunning landscapes in Australia. The chalets, inspired by the old High Country cattlemen's huts and painted in the hues of the surrounding snow gums, remain open all year. Summertime mountain biking and walks in the Alpine National Park give way to cross-country skiing and tobogganing come snow season. You'll find Dinner Plain – Australia's highest freehold village at 1,500 m – just 10 minutes from Mount Hotham ski resort. Unlike a 'resort', however, you don't need to pay entry fees to visit, and you can even bring your pooch.

↓ *Dinner Plain Alpine Village*



## FIVE OF OUR FAVOURITES

1. The Pea Shooter Toboggan Slope  
**Page 42**
2. Dinner Plain Mountain Bike Park  
**Page 34**
3. The Brabralung Trail shared path  
**Page 31**
4. Dinner Plain Festival of Light  
**Page 44**
5. Charmichael Falls  
**Page 21**



# ALPINE RESORTS

## FALLS CREEK

From skiing to mountain biking, Australia's largest alpine resort is adventure packed 365 days a year.

Located 30 km from Mount Beauty at an elevation of 1,580 m, this family-friendly ski resort has something for all abilities, with about 90 ski and snowboard runs and 14 lifts. The resort also has tobogganing for the kids and a fantastic network of cross-country ski trails. When the snow melts, a whole new world of adventure unfolds. Mountain bike the designer trails of Falls Creek Bike Park, discover historic huts or hike through the Alpine National Park and experience the beauty of an alpine summer.

## MOUNT HOTHAM

The highest ski resort in Australia has unbeatable views and the most spectacular terrain.

The Great Alpine Road to Mount Hotham from Bright is one of the country's most stunning drives, reaching an elevation of 1,845 m with mountain views as far as the eye can see. In summer Mount Hotham is surrounded by scenic hiking trails in the Alpine National Park. When the snow begins to fall, the mountain's steep slopes transform into epic ski and snowboarding descents serviced by 13 chairlifts. Mount Hotham also has three terrain parks, cross-country ski trails and family activities like dog sledding.



↓ Falls Creek Resort

# NATIONAL PARKS

---

## MOUNT BUFFALO NATIONAL PARK

Sheer granite cliffs that plunge 300 m to the gully below, mystical boulders strewn across the plateau, snow gums and waterfalls, canyons, crevices and caves, winter snow and summer wildflowers – Mount Buffalo National Park is a truly special wonder of the natural world.

Come and explore the park's many walking trails, peer over The Gorge Lookout (Page 20) and see the historic chalet, hike up to the 1,723 m summit of The Horn for 360° views, go camping at Lake Catani, or visit during the snow season for tobogganing and cross-country skiing.

### NEED TO KNOW

- Day visits are free all year.
- Campsite bookings are essential.
- Snow chains must be carried during snow season.

### GETTING THERE

The park entrance is located just 8 km from Porepunkah along Mount Buffalo Road. The road passes the park's main attractions and is sealed up until the Cresta Valley parking area.



↑ Views from The Horn, Mount Buffalo





## ALPINE NATIONAL PARK

Alpine National Park is Victoria's largest national park, protecting some of the rarest landscapes on the planet. From magical snow gum forests to the endangered mountain pygmy possum; the life that survives above the snowline is uniquely Australian and delicately beautiful.

Come in summer to discover heritage huts and hike the park's scenic trails, like the trail to the summit of Victoria's highest mountain – Mount Bogong – or the famous Razorback Ridge (Page 19). In winter, go skiing at Falls Creek and Mount Hotham alpine resorts (Page 13).

### NEED TO KNOW

- Entry fees apply to the alpine resorts during snow season only.
- Snow chains must be carried during snow season.

### GETTING THERE

The Mount Feathertop and Mount Hotham region of the Alpine National Park is accessible via the Great Alpine Road south from Harrietville. The Bogong High Plains near Falls Creek is accessible via Bogong High Plains Road from Mount Beauty.

# SHORT WALKS

## Short and sweet.

The High Country is full of wondrous and enjoyable walking trails. From riverside rambles and hidden canyons to street art, historic sites and natural bushland, here are four of the most popular short walks in Bright & Surrounds.

↳ The Hump walk, Mount Buffalo

### MORE TO DISCOVER

You'll find more short walks in our Walks & Trails Guide, available for free at the Visitor Information Centres in Bright, Myrtleford and Mount Beauty.

Alternatively, scan the QR code to search our track notes online.



## CANYON WALK, BRIGHT

**Distance:** 4.9 km / 1.5 hrs return,  
or 2.5 km / 45 min return

**Grade 2:** Formed track with some steps,  
obstacles and uneven ground.

**Start:** Howitt Park near the  
Star Road bridge.

A pretty trail along the Ovens River that can be walked as a long or short loop. The walk explores mining races and a small rocky canyon at its far end.



## TRONOH DEDGE HOLE, HARRIETVILLE

**Distance:** 1.4 km / 30 min return

**Grade 2:** Easy. Formed track with gentle  
slopes and steps.

**Start:** Tronoh Dredge Hole Picnic Area

A short walk that loops around the lake and through beautiful bushland. The lake is a lovely spot for a picnic, swim, kayak or to fish for trout.



## THE MOSAIC TRAIL, MYRTLEFORD

**Distance:** 5.6 km / 1.5 hrs return

**Grade 1:** Flat sealed path. Suitable  
for wheelchairs.

**Start:** The Balloon Wall, Rayner Street

Hunt for hidden mosaics in town and along the Ovens River on this enjoyable walking loop. Follow the Murray to Mountains Rail Trail north and cross into Rotary Park to join the Ovens River Trail. Return via Lewis Avenue.



## THE GORGE WALK, MOUNT BEAUTY

**Distance:** 4 km / 1.5 hrs return

**Grade 2:** Easy. Formed track with  
undulations and rocks.

**Start:** Opposite the Visitor Information  
Centre, Kiewa Valley Highway

Follow the west branch of the Kiewa River through bushland and past a swimming hole to a pretty outlook of the gorge.



↖ Mount Dunn walk, Mount Buffalo

# ICONIC WALKS

Australia, like you've never seen.

Summit Victoria's highest mountain, explore alpine meadows and weave your way through giant granite monoliths on your way to some of the best views you will ever see. The ancient landscapes of alpine Australia are incredibly rare and mesmerisingly beautiful. Get ready to fall in love on these iconic walks in the Alpine and Mount Buffalo National Parks.

---

## MOUNT BOGONG SUMMIT LOOP, TAWONGA

**Distance:** 21 km / 9 hrs return

**Grade 4:** Experience essential. Steep track with exposed summit.

**Start:** Mountain Creek Camping Area, Mountain Creek Road

A challenging and stunning bucket-list hike to the top of Victoria's highest mountain, Mount Bogong (1,986 m). Take the steeper Staircase Trail to the summit and descend via Eskdale Spur.




---

## MOUNT FEATHERTOP VIA THE RAZORBACK, MOUNT HOTHAM

**Distance:** 22 km / 8 hrs return

**Grade 4:** Moderate track becoming steep and rocky toward summit.

**Start:** Diamantina Hut parking area, Great Alpine Road

This iconic walk from Mount Hotham travels along an imposing ridgeline with stunning views all the way to the summit of Mount Feathertop. Return the same way.




---

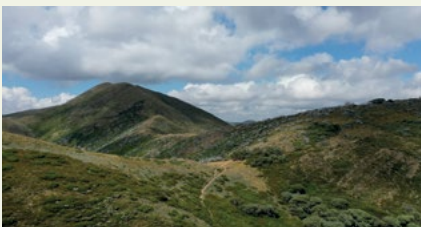
## MOUNT FEATHERTOP VIA BUNGALOW SPUR, HARRIETVILLE

**Distance:** 21 km / 8.5 hrs return

**Grade 4:** Experience recommended. Steep track with exposed summit.

**Start:** Feathertop Track, Harrietville

The relentless climb to the top of Victoria's second highest peak, Mount Feathertop (1,922 m), tops out with spectacular views over the Australian Alps. Return the same way.




---

## THE BIG WALK, MOUNT BUFFALO NATIONAL PARK

**Distance:** 22 km / 8 hrs return

**Grade 4:** Steep trail with steps and obstacles.

**Start:** Eurobin Creek Picnic Area, Mount Buffalo Road

Climb this ancient trail through alpine ash forests and gigantic granite boulders to the top of the sublime granite cliff face of The Gorge. Return the same way.



# LOOKOUTS & WATERFALLS

The best mountain views in Australia are found right here in the High Country.

Lush green valleys, cascading waterfalls and alpine peaks as far as the eye can see. Reaching some of the highest elevations in the country, the lookouts of Bright & Surrounds will leave you feeling on top of the world. Here are some sights worth seeing.



↳ The Gorge Lookout, Mount Buffalo

## LOOKOUTS

### The Gorge Lookout

The Gorge Day Visitor Area, Mount Buffalo National Park  
(vehicle access)

### Danny's Lookout

Great Alpine Road, Mount Hotham  
(vehicle access)

### Sullivans Lookout

Tawonga Gap Road, Mount Beauty  
(vehicle access)

### Huggins Lookout Walking Track

Deacon Avenue, Bright  
(Grade 3 | 1.4 km return)

### Reform Hill Walking Track

Jones Park, Great Alpine Road, Myrtleford  
(Grade 3 | 2.5 km loop)

## SHORT WATERFALL WALKS

### Ladies Bath and Eurobin Falls

Mount Buffalo Road, Mount Buffalo National Park  
(Grade 3 | 1.5 km return)

### Fainter Falls

Bogong High Plains Road, Alpine National Park  
(Grade 2 | 1.5 km return)

### Rollasons Falls

Mount Buffalo Road, Mount Buffalo National Park  
(Grade 3 | 3 km return)

### Crystal Brook Falls

The Gorge Day Visitor Area, Mount Buffalo National Park  
(Grade 2 | 2.7 km loop)

### Carmichael Falls

Dinner Plain Track, Alpine National Park, Dinner Plain  
(Grade 3 | 2 km return)



↓ Ladies Bath Falls, Mount Buffalo



# LANDSCAPES

Sublime and delicate.

With so many grand and monumental locations to photograph, we've sought some tips from a pair of landscape photographers that have won more than 500 awards between them. Here, Mieke Boynton and Matt Palmer of Alpine Light Studio in Bright share some of their favourite shoot locations in the High Country.



---

## THE CATHEDRAL, MOUNT BUFFALO

Mount Buffalo is our favourite photography location. It's hard to go past the grandeur of The Cathedral (pictured opposite) or other monolith-like dolerite structures on the plateau.

---

## LADIES BATH FALLS, MOUNT BUFFALO

For a more delicate view of Mount Buffalo, explore it through its waterfalls. Ladies Bath Falls is a popular spot and only a short walk from its parking area.

---

↓ *Wallace Hut, Mieke Boynton*

---

## THE RAZORBACK, MOUNT HOTHAM

Mount Hotham is fantastic all year round, with great hikes, huts and flowers in spring. It's perhaps at its most beautiful during the snow season when covered in blankets of white.

---

## WALLACE HUT, FALLS CREEK

Falls Creek allows you to get up close to beautiful snow gums and some of the historical huts and shacks in the highlands. Fainter Falls and Bogong Village make great stops on the way.

---



---

## MURRAY TO MOUNTAINS RAIL TRAIL, POREPUNKAH

The Murray to Mountains Rail Trail winds past many beautiful vistas. The avenue of trees outside Feathertop Winery at Porepunkah is stunning in autumn when it explodes in colour.



↓ Matt Palmer & Mieke Boynton



# SWIMMING SPOTS

Cool off the natural way.

There are wonderful swimming holes scattered throughout the entire Bright & Surrounds region. Here are 10 of the most popular places to swim to get you started.



Centenary Park, Bright



↑ Buckland Valley

**Bright River Pool & Splash Park,**  
Centenary Park,  
Bright

**Tronoh Dedge Hole,**  
access track off  
Feathertop Track,  
Harrietville

**The Pondage,**  
Embankment Drive,  
Mount Beauty

**River Pool,**  
Riverside Park,  
Porepunkah

**Lake Catani,**  
Mount Buffalo  
National Park

**Nimmo Bridge,**  
Buffalo River Road,  
Myrtleford

**Lake Buffalo,**  
Buffalo River Road,  
Buffalo River

**Lake Guy,**  
Lake View Crescent,  
Bogong Village

**Mermaid Beach & Rockpool,**  
Rock Pool Road,  
Mount Beauty

**Mount Beauty  
Swimming Pool,**  
Pool Road,  
Mount Beauty



## LOOK BEFORE YOU LEAP

Always check water levels, currents and weather warnings before swimming in natural waterways and be mindful of submerged objects. Conditions change rapidly.



## LIFEGUARDS

During summer, you'll find lifeguards on duty at the Bright River Pool and Porepunkah River Pool as well as the three public pools in Mount Beauty, Myrtleford and Bright.

## FIND OUT MORE

Scan the QR code for more information about our swimming spots.



# FISHING SPOTS

Fresh fish, pristine waters.

The beautiful Kiewa River is one of Victoria's most coveted trout fishing destinations, with large fish in plentiful supply between Mount Beauty and Dederang. There are countless spots to cast a line throughout the river systems and lakes of the Kiewa, Ovens and Buckland Valleys; here are some places with easy access.



↳ West Kiewa River, Mount Beauty



## RIVER FISHING

- **Ryder's Bridge,**  
Kiewa River, Tawonga
- **Nimmo Bridge,**  
Ovens River, Myrtleford
- **Picnic Area,**  
Buffalo River, Nug Nug
- **Smoko Campground,**  
Ovens River, Smoko

## LAKE FISHING

- **Mount Beauty Pondage,**  
Mount Beauty
- **The Dredge Hole,**  
Harrietville
- **Lake Buffalo,**  
Buffalo River
- **Lake Guy,**  
Bogong Village

## TROUT & SALMON FARM

The Mountain Fresh Trout & Salmon Farm on the Great Alpine Road, Harrietville, is perfect for those who need a quick catch. Lines and bait are provided.



## FIND MORE FISHING SPOTS

Scan the QR code for more about fishing spots, licences and catch limits in Bright & Surrounds.



↑ The Pondage, Mount Beauty

# SCENIC DRIVES

Seeing is believing.

Drive over Australia's highest main road for mountain views that stretch forever; explore the farm gates and wineries of the valleys; and carve your way up the sublime granite slopes of Mount Buffalo: A drive through the stunning landscapes of Bright & Surrounds should be high on everyone's list.

## THE GREAT ALPINE ROAD VIA THE CROSS

Bright to Dinner Plain

**Distance:** 133 km return

For one of the most jaw-dropping drives you'll ever do, take the Great Alpine Road from Bright through Harrietville and Mount Hotham to Dinner Plain. See the mesmerising views from Danny's Lookout, head over The Cross – which at 1,845 m is the highest point of any main through-road in Australia – and visit the alpine village of Dinner Plain. See the Alpine National Park; go hiking in summer and skiing in winter. Snow chains must be carried during snow season. Entry fees to Mount Hotham apply during the ski season, however, fees don't apply if you drive through to Dinner Plain without stopping.

### THINGS TO SEE

- Harrietville village
- Danny's Lookout
- The Cross
- Mount Hotham Alpine Resort
- JB Plain Hut
- CRB Hut
- The Brabralung Trail (Hotham to Dinner Plain shared path)
- Dinner Plain Alpine Village
- Dinner Plain MTB Park (green season)
- Dinner Plain toboggan slope (snow season)



Views of Mount Feathertop, Smoko



↑ Great Alpine Road, Mount Hotham

## THE VALLEYS LOOP

Bright via Mount Beauty and Ovens

**Distance:** 116 km return

This loop explores the beautiful Ovens, Kiewa and Happy Valleys and their towns, farm gates, breweries and wineries. From Bright, take the Great Alpine Road east and turn left at Tawonga Gap Road, upon which lies two lookouts with views of Mount Bogong. At the road's end, turn right onto the Kiewa Valley Highway and stop in Mount Beauty. Then, drive north on the highway to Running Creek and turn left onto Happy Valley Road, which will lead you back to the Great Alpine Road. Turn left and return to Bright via Ovens and Porepunkah.

### THINGS TO SEE

- Tawonga Gap Lookout
- Sullivans Lookout
- Crank Handle Brewery
- AnnaPurna Estate
- Eagle Range Estate
- Homestead Estate
- Happy Valley Hotel
- Pepo Farms Farm Gate Store
- The Red Stag Farm & Restaurant
- Buffalo Berry Farm
- Tatanka Gardens
- Punkah Pub
- Feathertop Winery (by appointment)
- Ringer Reef Winery
- Billy Button Cellar Door
- Bright Brewery

## MOUNT BUFFALO ROAD

Porepunkah to The Horn, Mount Buffalo

**Distance:** 74 km return

This drive through Mount Buffalo National Park is jam-packed with things to see, including panoramic views, Australia's largest timber building, waterfalls and walks. Grab supplies in Porepunkah then exit left onto the Great Alpine Road. At the round-a-bout, take the Mount Buffalo Road turn off. This road will take you all the way to Mount Buffalo's highest point – The Horn. During the snow season, you'll only be able to drive as far as Cresta Valley (snow chains required).

### THINGS TO SEE

- Ladies Bath & Eurobin Falls
- The Gorge Lookout
- Crystal Brook Falls
- Mount Buffalo Chalet
- Mount Buffalo Plateau
- Lake Catani Picnic Area
- The Horn Picnic Area, Lookout & Walking Track
- Dingo Dell Toboggan Slope, snowshoeing, XC skiing and cafe (snow season only)

# RAIL TRAIL & BIKE PATHS

No traffic, no worries.

Ride to vineyards and farm gates, along rivers and mountain-lined valleys on our fun, sealed and vehicle-free trails. Our trails are part of a scenic bike path network that stretches for over 150 km from the foothills of Mount Hotham to Myrtleford and beyond. With so much to explore, here are a few suggestions on where to start.

↓ *Mount Beauty to Tawonga shared trail, Tawonga South*





↓ Great Valley Trail, Freeburgh



## BIKE HIRE, TOURS & TRANSFERS

Hire bicycles and e-bikes at the bike shops in Bright, Myrtleford and Mount Beauty, where you'll also find bike sales, parts and mechanics. Transfers and tours available.

## MURRAY TO MOUNTAINS FARM GATE & WINE TRAIL

**Where:** Gapsted to Porepunkah

**Distance:** 33 km one way

This popular section of the 110 km Murray to Mountains Rail Trail passes Gapsted Wines, Michellini Wines, Billy Button & Bush Track Cellar Door, Alpine Blueberries, Pepo Farms Farm Gate Store, Buffalo Berry Farm, Tatanka Gardens, Feathertop Winery (by appointment), Ringer Reef Winery and Punkah Pantry.

## GREAT VALLEY TRAIL

**Where:** Bright to Harrietville

**Distance:** 27 km one way

Follow the Ovens River past farmland, remnant gold-mining sites and native bush while admiring the views of Mount Feathertop as you ride to the idyllic village of Harrietville.

## OTHER BIKE PATHS TO TRY

- **Mosaic Trail**  
Myrtleford | 5 km loop
- **Kiewa River Trail**  
Mount Beauty | 6 km return
- **Bennetts Trail**  
Bright to Wandiligong | 11 km return
- **Murray to Mountains**  
Bright to Porepunkah | 12 km return
- **Mount Beauty to Tawonga Trail**  
Mount Beauty | 14 km return
- **Brabralung Trail**  
Dinner Plain to Hotham | 24 km return

## EVEN MORE RIDES

Scan the QR code for more cycling routes.



# ROAD CYCLING

If there's anywhere in Australia that justifies screaming out a good old Jens Voigt "shut up legs", it's here. Our mountains are home to four of the 7 Peaks road cycling climbs, where pain fades at the sight of mesmerising views (well, almost).

↓ *Buckland Valley*

## CONQUER THE 7 PEAKS

### MOUNT HOTHAM

**Start:** Harriette Bakery  
**Route:** Great Alpine Road  
**Finish:** Hotham Alpine Village  
**Distance:** 80 km  
**Rise:** 1,321 m

### MOUNT BUFFALO

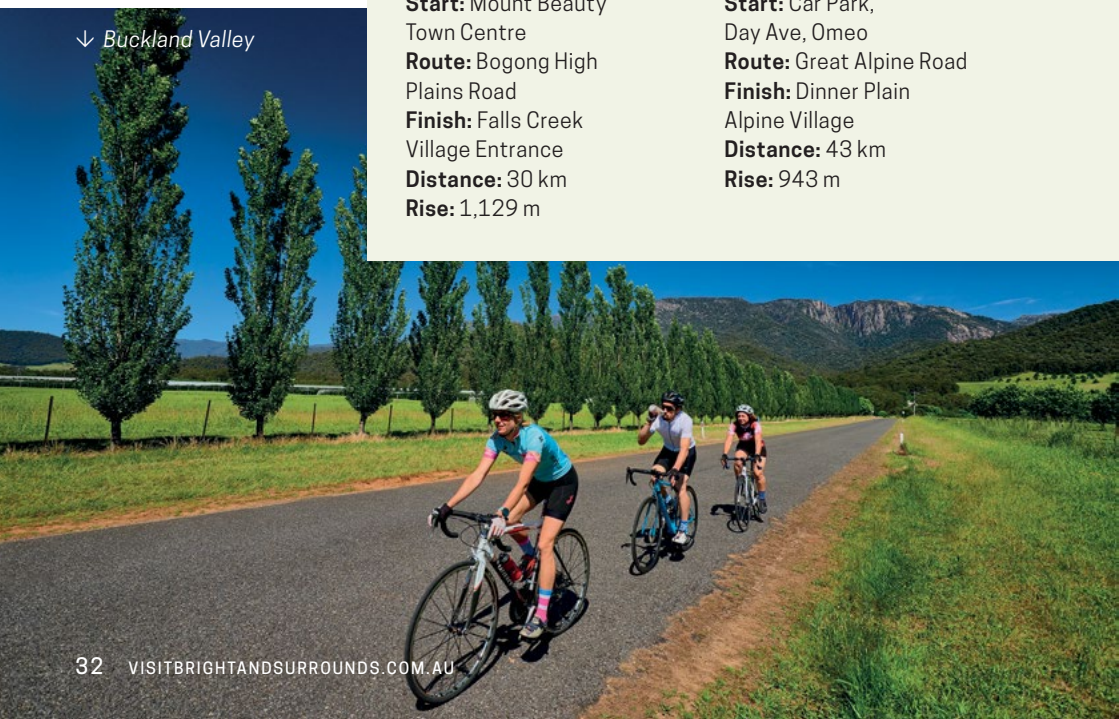
**Start:** Eurobin Creek Picnic Area  
**Route:** Mount Buffalo Road  
**Finish:** The Gorge Day Visitor Area  
**Distance:** 20.4 km  
**Rise:** 1,015 m

### FALLS CREEK

**Start:** Mount Beauty Town Centre  
**Route:** Bogong High Plains Road  
**Finish:** Falls Creek Village Entrance  
**Distance:** 80 km  
**Rise:** 1,129 m

### DINNER PLAIN

**Start:** Car Park, Day Ave, Omeo  
**Route:** Great Alpine Road  
**Finish:** Dinner Plain Alpine Village  
**Distance:** 43 km  
**Rise:** 943 m



## RIDE SUGGESTIONS

Scan the QR code for gravel riding ideas.



↑ Bright

# GRAVEL & BIKEPACKING ADVENTURES

Gravel – we’ve got miles of it: forest roads that lead to alpine tracks, that scale exposed mountain ranges, that descend into river valleys that lead you back to the comforts of town. These tracks are made for adventure, so grab a topo map and pack your saddle bag, it’s time to get grinding.



### EXPERT TIP

Match your tyres to your ride. Many of our gravel tracks climb high into the mountains and have long, steep, fast and winding descents that are safer and more enjoyable to ride on the fatter tyres of a mountain bike compared with the typical 25 mm tyres of a gravel bike.



### PREPARE FOR ANYTHING

Always ensure you are carrying a detailed topographical map, adequate food, water, clothing and a bike repair kit when travelling into the bush. Phone reception is scarce and cannot be relied upon.

The weather can change abruptly in alpine areas, so check the latest fire, rain and snow conditions before you set off.

# MOUNTAIN BIKE PARKS

With everything from iconic flow trail, teeth-cracking downhill, techy cross-country singletrack, pump track, BMX and jumps, it won't take you long to figure out why Bright & Surrounds is a magnet for Australia's best mountain bikers.

↙ *Dinner Plain MTB Park*



↘ *Mystic Park*

---

## MYSTIC PARK, BRIGHT

**Open:** All seasons

**Trailhead:** Coronation Avenue, Bright

**Trails:** Flow, downhill, XC, pump track, BMX

**Shuttles:** Weekends and holidays

**More info:** [mysticpark.org.au](http://mysticpark.org.au)

---

## BIG HILL MTB PARK, MOUNT BEAUTY

**Open:** All seasons

**Trailhead:** Bogong High Plains Road, Mount Beauty

**Trails:** Classic hand-built downhill, XC

**More info:** [tmb.org.au](http://tmb.org.au)

---

## FALL CREEK MTB PARK

**Open:** November to May

**Trailhead:** Bogong High Plains Road, Falls Creek

**Trails:** Flow, downhill, XC

**Shuttles:** Weekends and holidays

**More info:** [falls creek.com.au](http://falls creek.com.au)

---

## DINNER PLAIN MTB PARK

**Open:** November to May

**North Trailhead:** End of Scrubbers End Road

**South Trailhead:** Near Geebung Road

**Trails:** Flow and XC with climbing trail

**More info:** [visitdinnerplain.com.au](http://visitdinnerplain.com.au)



↑ *Mount Buffalo Gorge*

# ADVENTURE

The mountains and rivers of Bright & Surrounds offer endless adventures, from overnight hiking, camping, bikepacking, rock climbing, off roading, kayaking, backcountry skiing, horse riding, sled dog rides and scenic flights. Check out these popular tour operators for inspiration.



↑ *Bogong Horseback Adventures*

---

## OUTDOOR GUIDES

Go horse riding, abseiling or rock climbing, enjoy a picnic while dangling over the side of a cliff, or go caving, canyoning and kayaking with one of our adventure tour operators:

- Adventure Guides Australia
- Bright Adventure Company
- Bogong Horseback Adventures

---

## PARAGLIDING

Fly high above Bright on a tandem paraglide ride or learn to fly with one of our paragliding schools:

- Active Flight Paragliding
- Alpine Paragliding
- Bright Flight Paragliding

# EAT & DRINK

Holiday food-photos  
never tasted this good!

Trendy eateries, acclaimed chefs, award-winning wines and locally roasted coffee.

The restaurants, cafes, bars, cellar doors and farm gates of Bright & Surrounds focus on quality, expertise and 'the source'. With an abundance of places to eat and drink throughout our towns and villages, we talk to seven passionate producers who represent the essence of who we are.

---

## THE COFFEE ROASTER

**Luke Dudley, Sixpence Coffee**

15 Wills Street, Bright

Sourcing tabi beans from their own small coffee plantation in Colombia as well as from countries like Kenya and Panama is only part of Luke Dudley's story in his quest for the perfect cup. He says his small-batch roastery, Sixpence Coffee, uses the finest equipment and skilled professionals who strive for excellence in their roasting and brewing to provide the customer with an exceptional coffee experience.

"All we really do is coffee. When you're really focused on the thing that you do, you've got the time and the energy to make it really good," says Luke.



---

## THE WINEMAKER

### Jo Marsh, Billy Button Wines

Cellar Doors at 161 Myrtle Street,  
Myrtleford and 11 Camp Street, Bright

When renowned winemaker Jo Marsh first discovered the Alpine Valleys Wine Region, she immediately fell in love. “I could see this fruit that was amazing quality and I felt like it was a secret that no one knew about, so starting Billy Button was my answer to that,” she says.

Perfect for producing elegant cool-climate and medium-bodied wines, Jo says the diversity of grape varieties that can be grown in the region permits our winemakers to work with a number of rare varieties, such as Tempranillo, Saperavi and Schioppettino in the reds and Fiano, Vermentino and Vespolina in the whites.




---

## THE DISTILLER

### Hamish Reed, Reed & Co. Distillery

15 Wills Street, Bright

A love affair with Japan and its approach to refinement and quality combined with the spirit of Bright’s landscape inspires the refreshing creations of distiller and chef Hamish Reed. He says citriodora, peppermint gum and Australian mountain pepper replace traditional English-based botanicals, while locally grown sencha green tea, yuzu fruit and pine round out the flavours of Reed & Co.’s range of gin, yuzu and shochu. Complimenting these tastes is the divine bar menu, which cross-pollinates with the ingredients used in the distilling process.

“In short, it’s the sort of food that we like consuming while we’re drinking cocktails. It’s easy eating,” says Hamish.



---

## THE CHEESEMAKER

### **Luke Armstrong, The Peaks Cheese**

Petite Providore, Shop 5,  
4 Ireland Street, Bright

Milk sourced from a single organic farm of Normande cows in the always lush Kiewa Valley is crucial to producing the exquisite handmade mountain-style cheeses of The Peaks Cheese, says cheesemaker Luke Armstrong. “You can’t make good cheese from bad milk,” says Luke, whose cheesemaking style is inspired by the artisan cheeses of the Swiss and French Alps.

“Normande cows are renowned for their cheese making properties. They produce very rich, creamy milk, so they’re used in France for a lot of the famous soft cheeses. They’re very rare in Australia,” he says.



---

## THE CHEF

### **Emma Handley, Templar Lodge**

181-183 Kiewa Valley Highway, Tawonga

Fresh, local and high-quality seasonal ingredients – many sourced from her own extensive vegetable garden – are what defines Emma Handley’s approach to cooking. The award-winning chef, who got her start in the industry as an apprentice at age 15, is passionate about the quality of our region’s produce and sources her ingredients locally, ensuring the ultimate freshness.

For me, Templar Lodge is about: “keeping it fresh and making sure people are having the best quality produce at the right time of year,” says Emma. “My menu will change every weekend.”





**SEARCH MORE  
PLACES TO EAT  
AND DRINK**




---

## THE BARBEQUER

**Benni McKechnie,  
The Old Factory Brewing Co.**  
15 Myrtle Street, Myrtleford

It's all about taking our time, says Benni McKechnie, who may spend up to 14 hours barbecuing the acclaimed mouth-watering beef briskets of The Old Factory. "It's a low and slow process," he says.

The perfect combination of quality and marbled meats – including pork belly, ribs and chicken wings – slow cooked over red box timber on a precision-managed fire results in a classic American-style barbeque that pairs perfectly with the Factory's traditional in-house craft brews.

"All of our beer recipes are designed around the hops that are available from down the road," says Benni.




---

## THE BREWER

**Craig King, Crank Handle Brewery**  
211 Kiewa Valley Highway, Tawonga South

Fresh Kiewa Valley water – the main ingredient in beer – is part of the secret to Crank Handle Brewery's flavoursome small-batch brews, says brewer Craig King.

"We're at the top of the Kiewa River, so we get a very soft water and brewers really like that," says Craig. "We don't need to process it to get stuff out."

Brewed on site is a range of traditional beers like ale, lager and pilsner as well as new world brews like the fruity pale ale, which match perfectly with the tempting bar menu of local produce and the brewery's views of Mount Bogong.



# SHOPPING & MARKETS

You're on holiday, after all.

Weave your way in and out the doors of Bright's boutique stores, discover antique wares, homewares and clothing in Myrtleford, and explore the adventure gear shops and niche boutiques of Mount Beauty and Tawonga South. There's a little something for everyone here in Bright & Surrounds, and plenty of places to stop for a coffee too.



## MONTHLY MARKETS

Handcrafted wares, local produce, gifts, music and street food. There's a reason why our markets are our most googled attraction.

---

### BRIGHT MAKE IT, BAKE IT, GROW IT MARKET

**When:** Third Saturday of every month.

**Time:** 9:00 am – 1:00 pm

**Where:** Howitt Park, Bright

---



---

### MYRTLEFORD FARMERS MARKET

**When:** Fourth Saturday of every month

**Time:** 8:30 am – 12:30 pm

**Where:** Myrtleford Piazza

---

### MOUNT BEAUTY COMMUNITY MARKET

**When:** First Saturday of every month

**Time:** 9:00 am – 1:00 pm

**Where:** Hollonds Street, Mount Beauty

---

### MYRTLEFORD FLEA MARKET

**When:** Second Saturday of the month, January to May and September to December

**Time:** 9:00 am – 12:00 pm

**Where:** Old School House Museum, 29 Elgin Street, Myrtleford



### SEASONAL MARKETS

Bright & Surrounds also has more than a dozen large annual markets that coincide with events and public holidays. Scan the QR code to search what's on during your stay or drop into a Visitor Information Centre.



# FAMILY FAVOURITES

↓ Centenary Park, Bright



## Tried and tested ideas.

When it comes to keeping kids entertained, we've got plenty of things to do and places to see in Bright & Surrounds. Here are some that are bound to keep your little people in a happy holiday mood.



↓ Tobogganing, Dinner Plain

## ENERGY TO BURN

Ride the Hot Wheels beginner MTB Track and Pump Track at Mystic Park in Bright; search for hidden mosaics on Myrtleford's Mosaic Trail and stop for a game of giant snakes and ladders at Jubilee Park. During the snow season, drive to Dinner Plain to go tobogganing or sled dog riding.

## RAINY DAYS IN BRIGHT

Head indoors to Sun Cinema in Bright to catch a family film, stop for a treat at the lolly shops and ice cream store, try your luck in a virtual reality challenge at the Cloud 9 Escape Rooms, or unleash your little Picasso at a kids' painting session at Art Bar.

↓ Jubilee Park, Myrtleford



## PLACES TO RUN RIOT

Check out these great playgrounds:

- **Bicentennial Park & Skate Park**  
Mount Beauty
- **Cundy Park & Skate Park**  
Myrtleford
- **Howitt Park**  
Bright
- **Riverside Park**  
Porepunkah
- **Tavare Park**  
Harrietville

## ON THE FARM

Kids love the petting zoo at the Red Stag Deer and Emu Farm in Eurobin, followed by an ice cream at the nearby Buffalo Berry Farm. You can even pick your own berries during the summer berry season. Alternatively, head to the Mountain Fresh Trout & Salmon Farm in Harrietville where catching a fish is almost guaranteed. Lines and bait provided.

## SUMMER SWIMS

Bright Splash Park and River Pool is always a winner with kids of all ages. Little kids will love wading at Mermaid Beach while the big kids swim in The Rockpool in Mount Beauty. Porepunkah River Pool and The Dredge Hole in Harrietville are great for all ages and have enough room for paddle boarding and kayaking too.



↓ Splash Park, Bright



↓ Great Valley Trail

# FESTIVALS & EVENTS

We're always up to something in Bright & Surrounds and with well over 130 events each year, there's no excuse not to kick up your heels and join in. These are some of our annual favourites.

↓ *Alpe de Buffalo, Bright*



## FESTIVALS & CELEBRATIONS

### January

Dinner Plain Festival of Light

Bonjour Bright Festival

### March

Myrtleford Festival

### April

Bright Autumn Festival

Dinner Plain Easter Festival

Wandiligong Nut Festival

### May

La Fiera Italian Festival

### June

Darker Days Dark Beer Festival

### October

Bright Spring Festival

Myrtleford Show

### November

Bright's Iconic Rod Run

## ART & CULTURAL HERITAGE

### February

Adventure Travel Film Festival

### March

Brighter Days Festival

Shakespeare in the Vines

### April

Mount Beauty Music Festival

### May

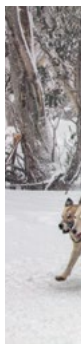
Bright Cabaret & Comedy Festival

### October

Bright Festival of Photography

### December

Bright Mountain Film Tour






---

## SPORT

**March**

Dederang Picnic Races

**December**

Myrtleford Golden  
Spurs Rodeo

---

## SNOW

**August**

Kangaroo Hoppet Ski Race  
Pub to Pub Ski Race  
Dinner Plain Sled  
Dog Challenge



↑ Dinner Plain Sled Dog Challenge

---

## CYCLING EVENTS

**January**

Alpine Classic

**February**

The GOAT

**March**

Peaks Challenge

**April**

Alpe De Buffalo Junior  
Cycling Tour

**May**

Pineapple Express

**June**

Alpine Cyclocross

**December**

Tour of Bright

---

## RUNNING EVENTS

**April**

Buffalo Stampede

**May**

Mount Beauty  
Running Festival

**June**

Wandi Cross

**August**

Bright Running Festival

**October**

Harrietville Half Marathon  
4 Peaks Bright  
Alpine Climb

## SEARCH WHAT'S ON

From live music to markets, sporting events and retreats... there's plenty more happening in Bright & Surrounds. Scan the QR code to see what's on during your stay.



# MUSEUMS

Every place has a story to tell...

Ours tells of the great migrations of bogong moth that once attracted First Nations from far and wide to the alpine peaks; it tells of the clash of cultures, loss, colonial thirst for land and the pockmarks left by gold fever. If truth be told, it's a fierce and often unpleasant history. But, it also shines with love and resilience: the bonds of family and culture, community and survival. From snow to hydro, dairy, tobacco, forestry and tourism, it's the story of us. And you'll find it told at one of our four little museums in Bright & Surrounds.



## KIEWA VALLEY HISTORICAL SOCIETY MUSEUM

31 Bogong High Plains Road, Mount Beauty

**Open:** 7 days a week except Christmas Day

## BRIGHT MUSEUM AT THE OLD TRAIN STATION

10 Railway Avenue, Bright

**Open:** Saturdays & Sundays from September to mid-June and school holidays

2:00 pm – 4:00 pm



↑ Myrtleford

## HARRIETTEVILLE MUSEUM AT THE OLD MINER'S COTTAGE

217 Great Alpine Road, Harrietteville

**Open:** Saturdays & Sundays

10:00 pm – 3:00 pm

## MYRTLEFORD MUSEUM AT THE OLD SCHOOL HOUSE

29 Elgin Street, Myrtleford

**Open:** Sundays from September to May

2:00 pm – 5:00 pm



# ART

Experience the creative fringe of Bright & Surrounds at a gallery, studio, or get out and explore the street art of Myrtleford.

## THE MOSAIC TRAIL

Details on Page 17

Slow down, look in those forgotten places and enter the enchanted world of hidden mosaics that dot the town of Myrtleford.

↙ Jubilee Park, Myrtleford



## ART BAR

100 Gavan Street, Bright

Paint your own masterpiece under the step-by-step guidance of your art instructor, complete with grazing board and wine.

## BRIGHT ART GALLERY & CULTURAL CENTRE

28 Mountbatten Avenue, Bright

Experience a diverse showcase of art exhibitions, workshops, cultural experiences and original art for sale.

## MYRTLEFORD GALLERY

51A Standish Street, Myrtleford

Shop for original artworks from a curated selection of contemporary realist paintings, sculpture and studio glass.

## WINDING ROAD DESIGN STUDIO

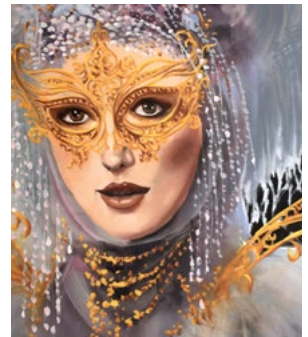
225 Kiewa Valley Highway, Tawonga South

See this delightfully tiny interior design studio featuring original handmade creations.

## ALPINE LIGHT GALLERY

102A Gavan Street, Bright

Be inspired by the unbelievable works of award-winning landscape photographers Mieke Boynton and Matt Palmer.



↙ Myrtleford Gallery



# VISITOR INFORMATION

Start your Bright & Surrounds escape at any of our three accredited Visitor Information Centres. Friendly locals offer a wealth of knowledge and can help you with accommodation, where to eat, what to do with the kids, where to hire a bike, tour bookings, and up-to-date information about festivals and events.

**Call 1800 111 885  
or go to  
[visitbrightandsurrounds.com.au](http://visitbrightandsurrounds.com.au)**

**Alpine Visitor Information Centre, Bright**  
119 Gavan Street, Bright  
1800 111 885  
[visitbrightandsurrounds.com.au](http://visitbrightandsurrounds.com.au)

**Myrtleford Visitor Information Centre**  
Great Alpine Road,  
Myrtleford  
03 5755 0514  
[visitmyrtlefordvic.com.au](http://visitmyrtlefordvic.com.au)

**Mount Beauty Visitor Information Centre**  
31 Bogong High Plains  
Road, Mount Beauty  
1800 111 885  
[visitmountbeauty.com.au](http://visitmountbeauty.com.au)

## MORE INFORMATION

For additional information about Bright & Surrounds, visit us online:

### Local

[visitbrightandsurrounds.com.au](http://visitbrightandsurrounds.com.au)  
[visitdinnerplain.com.au](http://visitdinnerplain.com.au)  
[visitharrietteville.com.au](http://visitharrietteville.com.au)  
[visitmyrtlefordvic.com.au](http://visitmyrtlefordvic.com.au)  
[visitmountbeauty.com.au](http://visitmountbeauty.com.au)

### Regional

[victoriashighcountry.com.au](http://victoriashighcountry.com.au)

**Alpine Shire Council**  
[alpineshire.vic.gov.au](http://alpineshire.vic.gov.au)

**Parks Victoria**  
[parks.vic.gov.au](http://parks.vic.gov.au)



## MOBILITY ACCESS – ALL TERRAIN WHEELCHAIR

The all-terrain access wheelchair is available from the YMCA Howmans Gap Alpine Centre at Falls Creek.

**CONTACTS**

**Emergency:**  
**Police / Fire / Ambulance**  
000

**SES**  
132 500

**VicRoads Road closures**  
131 170

**Victorian Bushfire  
Information Line**  
1800 240 667

**Parks Victoria**  
131 963

**V/Line**  
1800 800 007

**ABC Emergency Radio**  
89.7FM Bright

106.5FM Mount Beauty/  
Upper Kiewa

91.7FM Myrtleford

106.5FM/88.1FM  
Dinner Plain

**GET SOCIAL**

 @brightandsurrounds

 @brightandsurrounds

 /c/BrightSurrounds

Published in 2022  
by Alpine Shire Council,  
Po Box 139 Bright  
VIC 3741

If you have any feedback  
or comments on this  
guide please contact  
tourism@alpineshire.  
vic.gov.au or call  
03 5755 0555

**SUSTAINABLE TOURISM**

Bright & Surrounds encourages the use of reusable shopping bags, cups, containers and straws where possible. Please help protect our wildlife and environment by placing all rubbish securely inside a bin or carrying your waste out with you. Thank you!

**Disclaimer:**

Alpine Shire Council including its officers, agents and contractors "Publisher" has made every endeavour to ensure that details in this publication are correct at time of printing, but accept no responsibility for any inaccuracy or misrepresentation, whether by inclusion or omission, nor does the Publisher accept any responsibility for subsequent change or withdrawal of details or services shown which are subject to alteration without notice.



VISITBRIGHTANDSURROUNDS.COM.AU

